

# LUXURY PLASTIC EMULSION

Master (Acrylic Based) Luxury Plastic Emulsion is an exclusive quality emulsion with a soft matt finish. It is absolutely suitable for all interior masonry surfaces including brick work, plaster, cement rendering and wall boards. It is based on German Technology. It is available in wide range of colours and in new packing that is absolutely matched with international standard.

## PRODUCT BENEFITS



HIGH SCRUB RESISTANT



ANTI-FUNGAL



SUPREME QUALITY



STAIN RESISTANT



ENVIRONMENT FRIENDLY



## PRODUCT FEATURES

### WASHABILITY



✓ BEST IN CLASS  
HIGH  
MEDIUM  
LOW

### AVAILABLE PACKS



### PREPARATION REQUIRED



Surface must be clean, dry and free from efflorescent salts. After priming with Master Primer, fill surface with a mixture of 4 parts chalk, 1 part lithopone and 3-4 parts Master Primer to give it a paste like consistency. Allow the filler to dry overnight.



Remove all defective or poorly adhering material by rubbing down using a suitable abrasive paper and dust off. Spot prime and fill surface as described.



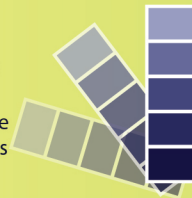
Make good minor defects. For large holes and cracks use sand and cement mixture. Allow to dry. Prime surface and then fill any surface imperfection with the filler described above. Allow to dry. Scuff surface using abrasive paper and dust off.

### COLOURS AVAILABLE

60

Factory Made Direct Shades

\*Light & Pastel shades can be tinted from the Master Paints Colour World outlets



### FINISH



PLASTIC SHINY NORMAL LOW

✓ SMOOTH

### TECHNICAL INFORMATION

#### Coverage

14-16 m<sup>2</sup> / liter / coat

#### Application

Brush / Roller / Spray Gun

#### Thinner

White Spray / Turpentine

#### Drying Time

12 hours between coats

#### No of Coats

2-3

#### Thinning

By Roller / Brush 10-15%  
By Spray 20-25%

#### Cleaning

Clean all equipment with Spirit or Turpentina

### SPREADING RATE



#### 1 COAT

On previously painted surfaces to get the one coat hiding up to 100sqft per liter/ per coat



#### 2 COATS

On new surfaces up to 100 sq.ft per liter by two coats

### TYPICAL SURFACES

- New surfaces.
- Previously painted surfaces.
- Powdery dusty surfaces. (With cracks and other surface defects)

### SAFETY & ENVIRONMENTAL NOTES

Keep away from ignition sources because it is flammable. You must wear eye protection while applying paint. Always keep container air tight close. It must be kept out of children's reach. In case of contact with eyes, wash with brimful cup of water and immediately approach doctor. Always manage container to keep it in upright position. Protect it from extreme temperatures. Please do not empty into drain and water sources. Use of mask is advisable while rubbing down and same is true when applying by spray never breath vapor / spray. In case ventilation is insufficient the use of proper respiratory equipment is advised.